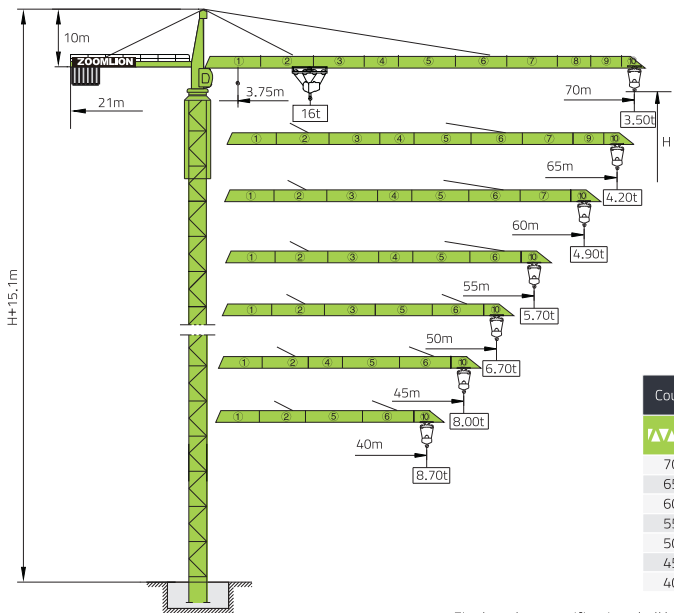


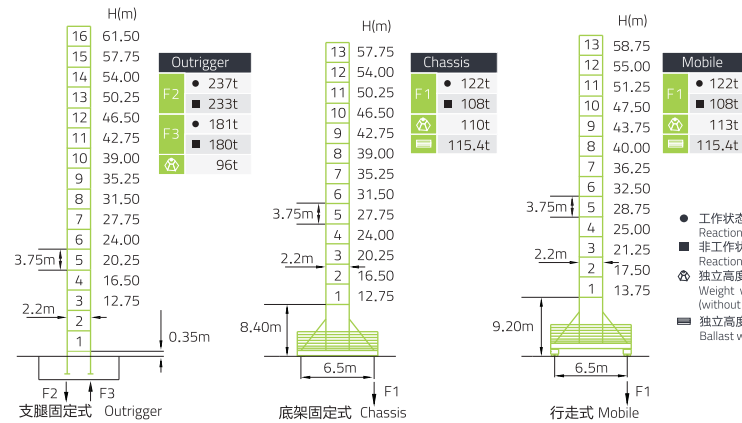
# TC7035B-16



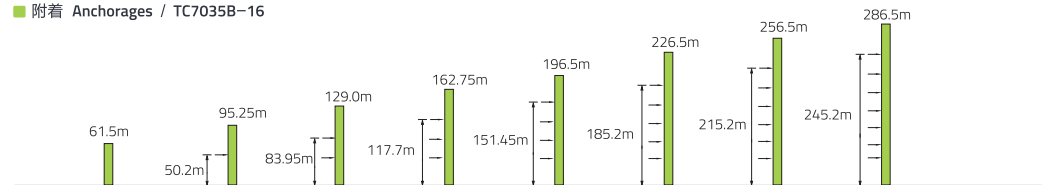
Counter jib ballast		4000-3000-2000 kg		
(kg)		PHZ4000	PHZ3000	PHZ2000
70m	21m	22000	3	2
65m	21m	20000	3	2
60m	21m	19000	3	1
55m	21m	18000	3	2
50m	21m	16000	3	0
45m	21m	14000	3	0
40m	21m	12000	3	0

Final product specification shall be in accordance with purchase order or sales contract only

## 塔身 Masts / 反力 Reactions / TC7035B-16




## 附着 Anchorages / TC7035B-16









250t+m

# TC7035B-16

## 起重特性 Load Diagrams

		Max.Capacity m/t	18.0	23.0	25.0	30.0	35.0	40.0	43.0	45.0	48.0	50.0	53.0	55.0	58.0	60.0	63.0	65.0	68.0	70.0
70m (R=71.1)	b	3.75~35.4/ 8.00	8.00					7.60	6.37	6.04	5.59	5.32	4.96	4.74	4.44	4.26	4.00	3.85	3.63	3.50
	b <sub>bd</sub>	3.75~18.4/16.00	16.00	12.30	11.10	8.89	7.33	6.16	5.60	5.26	4.82	4.55	4.18	3.95	3.66	3.48	3.23	3.07	2.86	2.72
65m (R=66.1)	b	3.75~37.9/ 8.00	8.00					7.52	6.91	6.55	6.07	5.78	5.39	5.16	4.84	4.64	4.37	4.20		
	b <sub>bd</sub>	3.75~19.7/16.00	16.00	13.30	12.00	9.67	7.99	6.74	6.13	5.77	5.29	5.01	4.62	4.38	4.06	3.86	3.59	3.42		
60m (R=61.1)	b	3.75~39.6/ 8.00	8.00					7.91	7.28	6.90	6.40	6.10	5.69	5.44	5.11	4.90				
	b <sub>bd</sub>	3.75~20.5/16.00	16.00	14.00	12.70	10.20	8.44	7.14	6.50	6.13	5.62	5.32	4.91	4.67	4.33	4.12				
55m (R=56.1)	b	3.75~41.2/ 8.00	8.00					7.61	7.22	6.69	6.38	5.96	5.70							
	b <sub>bd</sub>	3.75~21.3/16.00	16.00	14.60	13.30	10.70	8.85	7.49	6.83	6.44	5.92	5.60	5.18	4.92						
50m (R=51.1)	b	3.75~42.9/ 8.00	8.00					7.98	7.57	7.03	6.70									
	b <sub>bd</sub>	3.75~22.2/16.00	16.00	15.40	13.90	11.20	9.31	7.89	7.20	6.80	6.25	5.92								
45m (R=46.1)	b	3.75~45.0/ 8.00	8.00																	
	b <sub>bd</sub>	3.75~23.7/16.00	16.00	16.00	15.10	12.20	10.10	8.60	7.86	7.42										
40m (R=41.1)	b	3.75~40.0/ 8.00	8.00																	
	b <sub>bd</sub>	3.75~24.0/16.00	16.00	16.00	15.30	12.30	10.30	8.72												

## 传动机构 Mechanisms

配置 Configuration			b		b <sub>bd</sub>		kW	
			IV	V	IV	V		
 起升 Hoisting	QE1675E	m/min	37.5	75	18.75	37.5	60/60	600m ① (6 layers)
		t	8	4	16	8		
 回转 Slewing	HVV145 B1.130A HVV145 B2.130A	r/min	0~0.6				2x145 N.m	① 超出咨询我们 Consult us if overtop
 变幅 Trolleying	BP110A	m/min	0~100				11	
 行走 Travelling	ZAH52A-Dx2 ZDH52A-Dx2	m/min	0~25				4x5.2	
	380V(±10%)50Hz	86+4x5.2kW						

250t-m